

AUCTION CATALOG

Valley View Pork

Retirement Farm Equipment Auction

Tuesday, August 19, 2025—10 AM



Follow us on Facebook for auction announcements, auction results, live videos, giveaways, and more!

Thank you for attending!

Interested in having your own auction?

Contact Chuck Ranney

616-560-0839

IEDEMA
AUCTIONEERING, INC.
LIVE & ONLINE AUCTIONS

LOT# 1



Bush Hog Model: 2008 Rotary Cutter, 8' Wide, Twin Spindle, 540 PTO 3PT, Solid Rear tires, S/N: 12-00818

LOT# 2



Rhino Turf Flex model TX135 Batwing Mower, pull type, 15', PTO, S/N: 10506

LOT# 3



Implement Hitch for a Semi, Bolt on Truck Frame Extension, 2" Receiver, Lights, Fork Pockets, connect to 5th Wheel

LOT# 4



Sturdy-Lite Aluminum Headache Rack

LOT# 5



Merritt Aluminum Headache Rack

LOT# 7



Countyline York Landscape Rake, 3PT, 72"

LOT# 8



Lesco Sprayer with Hannay Hose Reel, 600 PSI 3/8" Hose, 180 Gallon Poly Tank, Model: 014200, S/N: SPG2749, Missing Pump

LOT# 9



Shaver MFG Tractor Mount Stump Grinder, Model: SC-50, 540 PTO, 3 PT, 34" Diameter Grinding Wheel

LOT# 10



Approximately 200' 8 5/4" Cable

LOT# 11



International Harvester Engine with Onan Generator, Engine Model: G549, Engine S/N: 132121, 8-cylinder gas powered, Onan Generator Model: 85.0 KR-15R, Single or 3 phase, Single - > 57 KW 3PH -> 85 KW, 247 Hours Showing

LOT# 12



FFC Snow Pusher Bucket Mount, 10', Model # LAF3617-0057, S/N: F047530

LOT# 13



Worksaver 7' Power Boom with Poly Bristles, 3PT, 540 PTO, Model: RMB-32-P, S/N 1602-02977

LOT# 14



Bush Hog 176 Grader Blade, 3PT Tractor Mount, 10' Wide, Hydraulic Swing and Tilt, Bolt on Cutting Edge

LOT# 16



(4) Crane Mats, approximately 4" - 5" wide X 14" tall, 16' long

LOT# 20



Hotsy Diesel Fueled Hot Water Power Washer, with hose, owner states unit works, no wand

LOT# 21



Portable Single Axle Welding/Generator with Trailer, Lincoln AC/DC welder with leads, 115/230 volt, welding rods, torch hose, gauges

LOT# 22



Brute aluminum side mounted boxes, 8'

LOT# 23



Ridgid Jack Stands (4), adjustable

LOT# 24

Skid of assorted wire (2)



LOT# 25

Skid of assorted wire (2)



LOT# 26

Skid of assorted cable, (3 rolls)



LOT# 27

Assorted hose, assorted sizes, (2 skids)



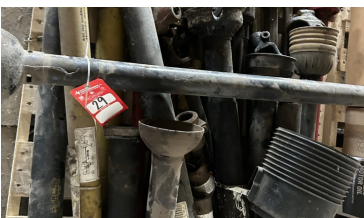
LOT# 28

Assorted Manure Hose, some with ends, some new



LOT# 29

Skid of assorted PTO shafts



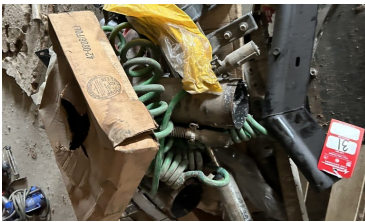
LOT# 30

Skid of assorted hydraulic cylinders



LOT# 31

Skid of assorted truck parts, fenders, brackets, straps, hose



LOT# 32

Skid of assorted roller chain, assorted sizes



LOT# 33

Skid of filters & belts, new oil, fuel & air



LOT# 35

2012 New Holland C 232 Rubber Track Skid Steer, Aux Hydraulics, Cab With heat and Air, Hand Controls, 82" Bucket, Bucket has been welded small hole/crack, 1673 hours showing, S/N: JAF0C232ECM427524



LOT# 36

Skid Steer Hydraulic Auger Attachment, 14" Bit



LOT# 37



Bradco Skid Steer Rock Bucket Attachment, 66"

LOT# 38



Bradco Skid Steer Rock Bucket Attachment, 66"

LOT# 39



2022 Case IH 500 Quadtrac Tractor, 6 Remotes, PTO, 30" Tracks, 500-Hp, 12.9L 6-Cylinder Engine, 16F Powershift Trans, Autosteer, Deluxe Cab, AFS Connect, 664 Hours Showing, S/N: JEEZC500ENF504377 ~ SERVICED AND FIELD READY

LOT# 40



2012 Case IH 550 Quadtrac Tractor, 6 Remotes, PTO, 30" Tracks, 12.9L 6 cylinder diesel engine, 550 Hp, 16 Powershift Trans, Autosteer, Deluxe Cab, Tracks replaced 2 seasons ago, new bogies, seals, bearings 1 season ago, 4982 Hours Showing, S/N: ZCF129458—SERVICED AND FIELD READY

LOT# 41



Versatile 2375 Bareback Tractor, 4wd, 4-Remotes, 520-85-R42 Duals all the way around, 24 Front Weights, Cummins M11 Diesel, 375 Hp. 12 Speed Trans, 50 Hours On Engine Overhaul, 7074 hours showing ~ SERVICED AND FIELD READY

LOT# 42



2010 Case IH 335 Magnum Tractor, MFWD, 3PT With Quick Hitch, 5 Remotes, PTO, 520-85-R46 Rear Duals, 480-70R34 Front Duals, 18 Front Weight, 8.9L 6-Cylinder Diesel Engine, 330 Hp, has 100-HP Chip added, 19-Speed Powershift Trans, Deluxe Cab, has Trinble Autosteer, it is also wired for Case IH Auto-steer, primarily used for planting and grain cart, 5628 Hours Showing, S/N: ZARZ07575 ~ SERVICED AND FIELD READY

LOT# 43



2009 Case IH 125 Puma Tractor With Case L760 Loader, MFWD, 3PT, PTO, 480-80R42 Rear Tires, 380-85R30 Front Tires, 8 Front Weights, 95" Bucket & includes bale spear, 6.7L 6-Cylinder Diesel, 18-Speed Forward, 6 Reverse Speeds, Partial Powershift, GPS light bar, 4440 hours showing, S/N: ZBBL05973 ~ SERVICED AND FIELD READY

LOT# 44



2004 Case IH MXU 125 Maxxum Tractor, MFWD, 3PT, PTO, 2-Remotes, 18.4R42 Rear Tires, 14.5R38 Front Tires, 16-Speed Trans, Partial Powershift, 8 Front Weights, 6.7L 6 Cylinder Diesel Engine, 8398 Hours Showing, S/N: ACP230944 ~ SERVICED AND FIELD READY

LOT# 45



1997 Case IH MX110 Maxxum Tractor, MFWD, 3PT, PTO, 2-Remotes, 18.4R38 Rear Tires, 14.9R28 Front Tires, 5.9L 6-Cylinder Diesel Engine, 16 Speeds Forward, 12 Reverse, Synchro Transmission, 7232 Hours Showing, S/N: JJA008014 ~ SERVICED AND FIELD READY

LOT# 46



2005 Case JX1075C Maxxima Tractor, MFWD, 3PT, PTO, 2-Remotes, Double Door Cab, 16.9-30 Rear Tires, 11.2-24 Front Tires, 2.9L 3-Cylinder Diesel, 75-HP, 16 Speed Trans, 2675 Hours, S/N: HJH028251 ~ SERVICED AND FIELD READY

LOT# 47



International 3088 Tractor, 3PT, PTO, 2-Remotes, 18.4-38 Rear Tires, 10.00-16 Front Tires, 4 Front Weights, 5.9L 6-Cylinder Diesel Engine, 16-Speed Partial Powershift, 4433 Hours Showing, S/N: 24800014000805 ~ SERVICED AND FIELD READY

LOT# 48



2019 Case IH 8250 Combine with Tracks, 2wd, Axial-Flow, AFS, Both 1000/500 Gear Boxes & Drive Shafts, 10151 Total Acres, 1708 Engine Hours, 1275 Separator Hours, Power Bin Extensions, HID Light Package, 4-Speed Trans, Reversers On Header Drive and Thrasher, Variable Speed Spreaders, Deluxe Cab with Heated and Cooled Seats, Power Adjust Unload Auger, S/N: YKG239850 ~ SERVICED AND FIELD READY

LOT# 49



2017 Capello HS 1230 Folding Corn Head, 12-Row 30", Model Quaser R12, Poly Snouts, Slight Bend in Auger Flighting, 2 Seasons on Gathering Chains, Several New Gear Box's, Auto Height, Auto Tilt, Head Sight System, Case Combine Hookup, S/N: 11051

LOT# 50



2018 Case Terra Flex Grain Head 35', Poly Snouts, Built In Transport, Auto Height/Tilt, Very Low Acres, S/N: YJH051691

LOT# 51



Landoll 6250-45 Disc 45', Hydraulic Wing Fold, low acres, all original disc blades, S/N: 62L1304480

LOT# 52



Sunflower 5135-42 Field Cultivator, 42' With 5-Bar Spike Tooth Land Leveler, Rear Hitch, Rear Hydraulics, Hydraulic Fold, Includes skid of extra sweeps, S/N: 05135D20030016

LOT# 53



J&M TF215 Double Twist Rolling Harrow, 45', Double Baskets, S/N: 1500694

LOT# 54



Sunflower 5035-28 Field Cultivator, 28', Hydraulic Wing Fold, 3-Bar Spike Tooth Land Leveler, Rear Hitch, Rear Hydraulics, 1-owner, only farmed this 130 acres, stored inside, like new, S/N: 05035A20050010

LOT# 55



Sunflower 5035-28 Field Cultivator 28', With 4-Bar Spike Tooth Leveler, Rear Hitch & Hydraulics, Hydraulic Wing Fold, S/N: 5035106109

LOT# 56



Brillion XL Series Cultipacker, App 30', Extendable Tongue, Light Kit, 1-owner, only farmed this 130 acres, stored inside, like new, Model XL0144W108, S/N: PXE1200646

LOT# 57



Sunflower 4511 Disc Chisel, Rear Hitch, Rear Hydraulics, 11-Shank, 1-owner, only farmed this 130 acres, stored inside, like new, S/N: GCS45110BZ400010*11

LOT# 58



Sunflower 4212-15 Chisel Plow, 15-Shank, S/N: 04212G20040028

LOT# 59



2014 Kuhn Krause Gladiator 1200 Strip Tiller with Fertilizer System, 12 Row 30" Spacing, Montag Poly Fertilizer Tank, Row Cleaners, includes skid of extra teeth and wear parts, S/N: 1200-1230-1703

LOT# 60



John Deere 1890 Air Seeder/Drill, CCS Seed Metering, set up for liquid fertilizer, S/N: A01890S705405

LOT# 61



2013 John Deere 1770 NT Planter, 24-Row, CCS Seed Delivery, Precision 20/20 Monitor, Corn & Bean Plates, Row Shut Off, 450-Gallon Liquid Fertilizer, Martin Till Row Cleaners, In Furrow Fertilizer Tubes & 2x2 Fertilizer Discs, Stored Indoors, includes skid of extra parts, S/N: 1A01770CHEM755718

LOT# 62



Demco Front Mount Poly Tank with mounting brackets, 300-gallon came off the Case 335

LOT# 63



Demco Side Quest 1200 poly tanks (2) with mounting brackets, 600-gallon each, came off Case 335

LOT# 64



Unverferth Seed Runner 3750, 3 Axle with Brakes, Honda GX340 Motor with Electric Start, 235/65R16 Tires, Manual Tarp, Pintle Hitch, Pendant Controls

LOT# 65



Brent Unverferth 880 Grain Cart, 880 Bushel, 20" Auger, Manual Tarp, Light Kit, 30.5L-32 Tires, Big 1000 PTO, hydraulic adjustable spout on end of auger, S/N: B24020121

LOT# 66



Top Air Tandem Axle Sprayer 800 Gallon Poly Tank, Aprox. 44' Booms, S/N: 161864

LOT# 67



Dalton AG ALG 27 Side Dresser, 1,000 Gallon Poly Tank, 11 Row, 300-95-R42 Tires, S/N: 08321

LOT# 68



Clark Anhydrous Applicator Side Dresser, 1100-gallon poly tank, not complete, S/N: TC181204144

LOT# 69



Nuhn QT Quad Tandem Manure Spreader, 12,000-Gallon, Pin Style Hitch, Hydraulic Drive, Tanker Model: 0021, 30.5L-R32 Flo-tation Tires, Nuhn 4 Hose Manure Top Dress with Disc, just used to haul pig manure, never had sand through spreader, S/N: 15380

LOT# 70



Nuhn QT Quad Tandem Manure Spreader, 12,000 Gal, Pin Style Hitch, Hydraulic Drive, Tanker Model: 0021, 30.5L R32 Flotation Tires, Nuhn 4 Hose Manure Top Dress with Disc, New hitch included, just used to haul pig manure, never had sand through spreader, S/N: 12230

LOT# 71



Nuhn Magnum 6750 Manure Spreader, Model: TM67525, 30.5L32 Flotation Tires, Hydraulic Drive, Nuhn 11 Shank Manure Injector, Has patched hole on side manure pipe, Pin Style Hitch, just used to haul pig manure, never had sand through spreader, includes extra parts, S/N: 06099

LOT# 72



Balzer 7500 Magnum Tandem Axle Manure Trailer / Spreader 30.5L32 Tires, Rear Discharge, Jurop Hydraulic Pump, S/N:7416 0407

LOT# 73



Meyer Industrial 8500 Tandem Axle Manure Spreader, Rear Discharge, 23L-26 Tires, S/N: STD58500562

LOT# 74



Skid of Manure Hose Fittings, and Manure Hose

LOT# 75



Waste Handlers Portable Pit Pump, never had sand through pump,

LOT# 76



2004 Wilson Tandem Axle Aluminum Livestock Trailer, 53', 66,000 lb GVWR, Aluminum Wheels, VIN: 1W1UDS2K54D528282

LOT# 77



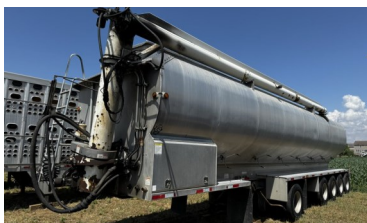
2012 EBY Tandem Axle Aluminum Livestock Trailer, 53', 66,000 GVWR Aluminum Wheels, VIN: 4A2LD532803003146

LOT# 78



2007 EBY Tandem Axle Aluminum Livestock Trailer, 53', 66,000 lb GVWR Aluminum Wheels, VIN: 4AZL5532573002273

LOT# 79



2014 Walinga 8 Bin Feed Trailer, GVWR: 142,500 lbs, Manual Landing Gear, 5 Axle which includes 2 lift axles, 11R 22.5 Tires, 31' Reach on 10" feed auger with remote control, VIN: 2W9HA4050EG001146

LOT# 80



2011 Walinga Tandem Axle Feed Trailer, 8-Compartment, Aluminum, Aluminum Wheels, 31' Reach on 10" feed auger with remote control, Vin: 2W9HA4023BG001028, REBUILT SALVAGE TITLE

LOT# 81



2015 Timpco Tandem Axle Hopper Bottom Trailer, 43', Manual Tarp, Double Hopper, GVWR 65,000#, hopper doors are electric open/close, Vin: 1TDH43027FB147827

LOT# 82



2005 Wilson Pacesetter Tri Axle Hopper Bottom Trailer, 45', 1-Lift Axle, Manual Tarp, Double Hopper, GVWR 75,000 lbs, Aluminum Wheels, Vin: 1W1MBF3T75A239914

LOT# 83



1998 Utility Tandem Axle Aluminum Flatbed Trailer, Spread Axle, 48' GVWR 80,000 lbs, VIN: 1UYF52488 WA5725 18

LOT# 84



1995 General Tri Axle Lowboy Trailer, 50 Ton, Hydraulic Locking Pin, Air Ride Suspension, VIN: 112SD2480SL044626

LOT# 85



2014 Western Star 4900 SB Tandem Axle Semi Truck, DD15 Detroit Diesel Engine, Eaton Fuller 13-Speed Trans, 13,300 Front Axle, 20,000 Lb Rear Axles, Dual Line Wet Kit, Air Ride Suspension, Air Ride Cab, Aluminum Wheels, Lights On Dash: Check Engine, ABS, 1 Unknown Light. Has estimated 700,000 miles on it, speedometer shows 53,000 miles but the ECM was replaced. Vin: 5KJJALD69EPFL3759

LOT# 86



1998 Kenworth T800 Tandem Axle Semi Truck, Cat 3406 Diesel, 13-Speed Trans, Hydraulic Wet Kit, Engine Brake, Air Ride Suspension, Air Ride Cab, Headache Rack, Aluminum Wheels, 747,635 Miles Showing, Vin: 1XKDDB9X1WJ764707

LOT# 87



2006 Peterbilt 378 Tandem Axle Semi Truck, CAT C15 Diesel, 18-Speed Trans, Dual Line Wet Kit, GVWR 59220, Air Ride Suspension, Air Ride Cab, Aluminum Wheels, 831,124 Miles Showing, Vin: 1XPFD0XX6D644046

LOT# 88



1984 Mack 3 Axle Dump Truck, Model R685S, 1 Lift Axle, PTO, Automatic Trans, 16' Box 8' Wide, Electric Tarp, Air Lock Tailgate, 102,579 Miles Showing, VIN: 1M2P131C2EA010323

LOT# 89



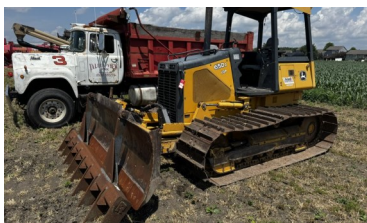
1998 Mac Lander Assembled Tandem Axle Skid Steer Trailer 14' Total, 136" Deck 32" Beaver Trail, Ramps, Pintle Hitch, 73" Wide, Vin: 4UVPF2023W1000553

LOT# 90



Holcomb Model 1600A Scraper, Rear Hydraulics 16:00R20 Tires, assorted hitches for various tractors, S/N 7513206

LOT# 91



John Deere 650J LGP Crawler Dozer, PIN: T0650JX132507, 28" Wide Tracks, 10' Blade, Rockland Root Rake Model: BR, Hydrostatic Transmission, 6-way blade, 90 hp, all new undercarriage approx. 2 years ago (approx 200 hours ago): chains, sprockets, bogie wheels, idlers, track pads. 4553 hours showing, S/N: 6815401

LOT# 92



Kobelco SK 210C Hydraulic Excavator 31-1/2" Steel Tracks, WB 4' Bucket Hydraulic Thumb Attachment, Includes WB 6' Ditching Bucket, pins & bushings are tight, AC/Heat works, 7883 Hours Showing S/N Y008-U1185

LOT# 93



2001 Schaeff SKL 863 Rubber Tire Wheel Loader, 17.5-25 Tires, 4 Cylinder Diesel, 86" Bucket, with Fork Attachment 43", Bale Spear Attachment, 6,885 Hours Showing, S/N 8635-0252

LOT# 94



Terex 3066c Articulated Off Road Dump Truck, 23.5 R25 Tires, S/N: A7341130

LOT# 95



Terex Custom Built Articulated Off Road Dump Trailer, 23.5 R25 Tires, comes with extra tire & rim