

Parcel #1



MBG Marketing.
 04726 CR 215
 Grand Junction, MI 49056
 Office 269-434-8082

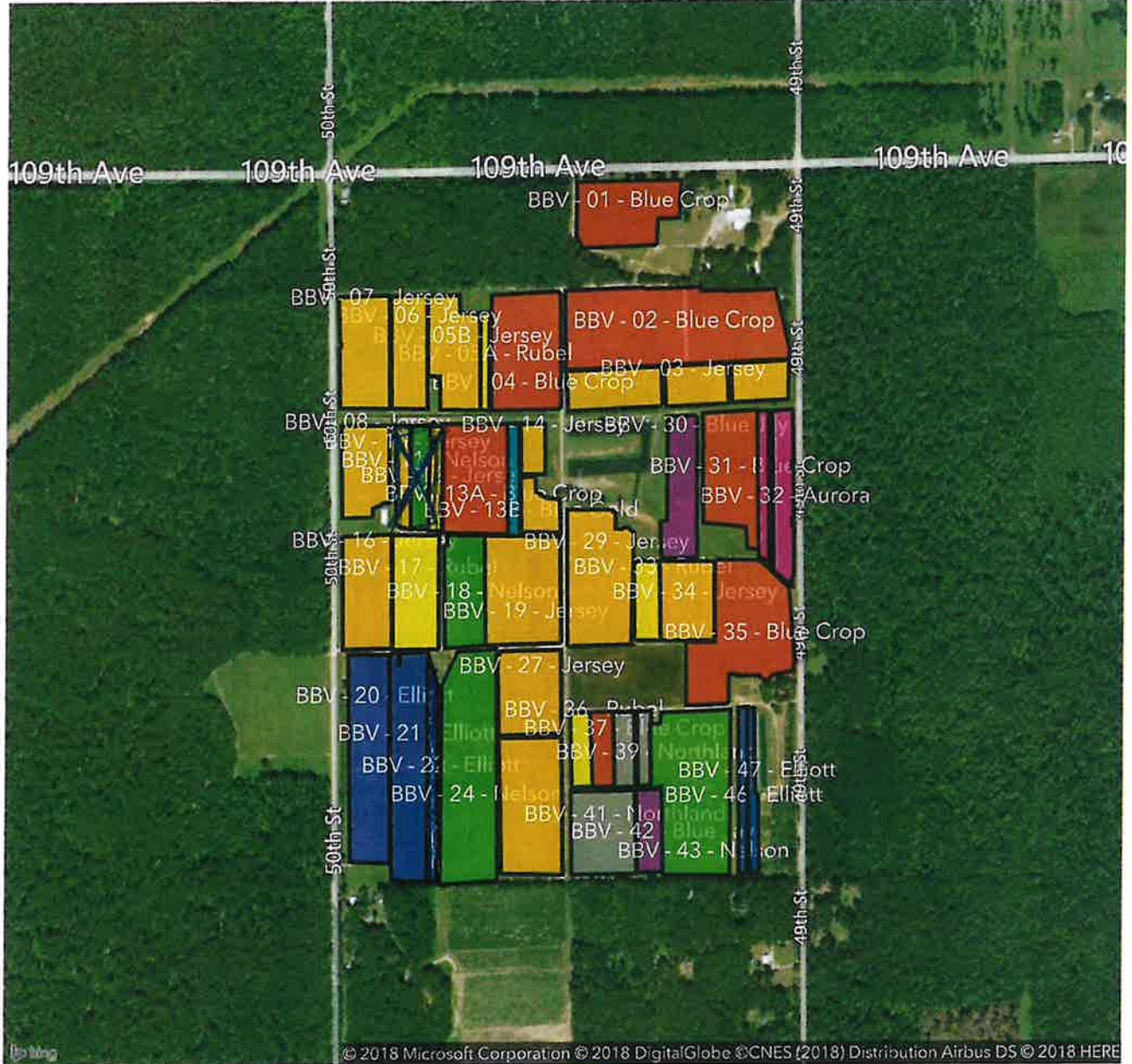
Blueberry Valley

May 19, 2018

Grower Cornerstone Ag Enterprises LLC

Farm Blueberry Valley

Field Multiple



■ Blue Crop	40.44 AC	■ Jersey	52.25 AC
■ Rubel	6.9 AC	■ Nelson	22.44 AC
■ Blue Gold	1.0 AC	■ Elliott	19.12 AC
■ Blue Jay	4.73 AC	■ Aurora	3.58 AC
■ Northland	5.71 AC		

Fields

Field Code / Name	Size	Crop	County / PLS	Lat / Lon
CAE - BBV - 01 BBV - 01 - Blue Crop	4.37 AC	Blueberry, Highbush Bluecrop	Allegan T1N R15W S12	42.48356, -86.025961
CAE - BBV - 02 BBV - 02 - Blue Crop	11.45 AC	Blueberry, Highbush Bluecrop	Allegan T1N R15W S12	42.481724, -86.024999
CAE - BBV - 03 BBV - 03 - Jersey	6.02 AC	Blueberry, Highbush Jersey	Allegan T1N R15W S12	42.480756, -86.026237
CAE - BBV - 04 BBV - 04 - Blue Crop	5.63 AC	Blueberry, Highbush Bluecrop	Allegan T1N R15W S12	42.481273, -86.028071
CAE - BBV - 05A BBV - 05A - Rubel	0.61 AC	Blueberry, Highbush Rubel	Allegan T1N R15W S12	42.481126, -86.028922
CAE - BBV - 05B BBV - 05B - Jersey	3.64 AC	Blueberry, Highbush Jersey	Allegan T1N R15W S12	42.48137, -86.029564
CAE - BBV - 06 BBV - 06 - Jersey	2.84 AC	Blueberry, Highbush Jersey	Allegan T1N R15W S12	42.481255, -86.030485
CAE - BBV - 07 BBV - 07 - Jersey	3.93 AC	Blueberry, Highbush Jersey	Allegan T1N R15W S12	42.480871, -86.031409
CAE - BBV - 08 BBV - 08 - Jersey	3.01 AC	Blueberry, Highbush Jersey	Allegan T1N R15W S12	42.479566, -86.03138
CAE - BBV - 10 BBV - 10 - Jersey	1.06 AC	Blueberry, Highbush Jersey	Allegan T1N R15W S12	42.479468, -86.030601
CAE - BBV - 11 BBV - 11 - Nelson	1.34 AC	Blueberry, Highbush	Allegan T1N R15W S12	42.479029, -86.030252
CAE - BBV - 12 BBV - 12 - Jersey	1.08 AC	Blueberry, Highbush Jersey	Allegan T1N R15W S12	42.479342, -86.029913
CAE - BBV - 13A BBV - 13A - Blue Crop	5.72 AC	Blueberry, Highbush Bluecrop	Allegan T1N R15W S12	42.479344, -86.029108
CAE - BBV - 13B BBV - 13B - Blue Gold	1 AC	Blueberry, Highbush Bluegold	Allegan T1N R15W S12	42.479325, -86.028319
CAE - BBV - 14 BBV - 14 - Jersey	2.09 AC	Blueberry, Highbush Jersey	Allegan T1N R15W S12	42.478765, -86.02775
CAE - BBV - 16 BBV - 16 - Jersey	3.96 AC	Blueberry, Highbush Jersey	Allegan T1N R15W S12	42.477596, -86.031338
CAE - BBV - 17 BBV - 17 - Rubel	3.75 AC	Blueberry, Highbush Rubel	Allegan T1N R15W S12	42.477605, -86.030327
CAE - BBV - 18 BBV - 18 - Nelson	3.17 AC	Blueberry, Highbush	Allegan T1N R15W S12	42.477553, -86.029311

Removed

Removed

Field Code / Name	Size	Crop	County / PLS	Lat / Lon
CAE - BBV - 19 BBV - 19 - Jersey	5.77 AC	Blueberry, Highbush Jersey	Allegan T1N R15W S12	42.477637, -86.02811
CAE - BBV - 20 BBV - 20 - Elliott	5.94 AC	Blueberry, Highbush	Allegan T1N R16W S24	42.475085, -86.031274
CAE - BBV - 21 BBV - 21 - Elliott	6.22 AC	Blueberry, Highbush	Allegan T1N R16W S24	42.474891, -86.030427
CAE - BBV - 22 BBV - 22 - Elliott	5 AC	Blueberry, Highbush	Allegan T1N R16W S24	42.474696, -86.029971
CAE - BBV - 24 BBV - 24 - Nelson	8.93 AC	Blueberry, Highbush	Allegan T1N R16W S24	42.474706, -86.029208
CAE - BBV - 27 BBV - 27 - Jersey	9.78 AC	Blueberry, Highbush Jersey	Allegan T1N R16W S24	42.474356, -86.027917
CAE - BBV - 29 BBV - 29 - Jersey	6 AC	Blueberry, Highbush Jersey	Allegan T1N R16W S24	42.477665, -86.026508
CAE - BBV - 30 BBV - 30 - Blue Jay	3.24 AC	Blueberry, Highbush Bluejay	Allegan T1N R16W S24	42.479473, -86.024816
CAE - BBV - 31 BBV - 31 - Blue Crop	4.65 AC	Blueberry, Highbush Bluecrop	Allegan T1N R16W S24	42.479209, -86.023806
CAE - BBV - 32 BBV - 32 - Aurora	3.58 AC	Blueberry, Highbush	Allegan T1N R16W S24	42.4791, -86.02271
CAE - BBV - 33 BBV - 33 - Rubel	1.44 AC	Blueberry, Highbush Rubel	Allegan T1N R16W S24	42.477439, -86.025531
CAE - BBV - 34 BBV - 34 - Jersey	3.07 AC	Blueberry, Highbush Jersey	Allegan T1N R16W S24	42.477472, -86.024696
CAE - BBV - 35 BBV - 35 - Blue Crop	7.44 AC	Blueberry, Highbush Bluecrop	Allegan T1N R16W S24	42.47724, -86.023322
CAE - BBV - 36 BBV - 36 - Rubel	1.1 AC	Blueberry, Highbush Rubel	Allegan T1N R16W S24	42.475214, -86.02688
CAE - BBV - 37 BBV - 37 - Blue Crop	1.18 AC	Blueberry, Highbush Bluecrop	Allegan T1N R16W S24	42.475382, -86.026444
CAE - BBV - 39 BBV - 39 - Northland	1.87 AC	Blueberry, Highbush	Allegan T1N R16W S24	42.475239, -86.025985
CAE - BBV - 41 BBV - 41 - Northland	3.84 AC	Blueberry, Highbush	Allegan T1N R16W S24	42.473945, -86.026414
CAE - BBV - 42 BBV - 42 - Blue Jay	1.49 AC	Blueberry, Highbush Bluejay	Allegan T1N R16W S24	42.473969, -86.025457

Field Code / Name	Size	Crop	County / PLS	Lat / Lon
CAE - BBV - 43 BBV - 43 - Nelson	9 AC	Blueberry, Highbush	Allegan T1N R16W S24	42.473954, -86.024488
CAE - BBV - 46 BBV - 46 - Elliott	0.98 AC	Blueberry, Highbush Elliott	Allegan T1N R16W S24	42.474583, -86.023518
CAE - BBV - 47 BBV - 47 - Elliott	0.98 AC	Blueberry, Highbush Elliott	Allegan T1N R16W S24	42.474868, -86.02335
TOTAL	156.17 AC			

Parcel # 2



04726 CR 215
Grand Junction, MI 49056

Office 269-434-8082

Print Field Map




April 26, 2016

Grower **Cornerstone Ag Enterprises.**

Farm **Shannon**



Leaflet | Bing, Image courtesy of USGS, State of Michigan, Earthstar Geographics, SIO, © 2016 Microsoft Corporation, © 2010 NAVTEQ, © AND

	Jersey	35.16 Acres		Rubel	5.05 Acres
	Blue Crop	7.27 Acres			

Fields

FIELD CODE / NAME	SIZE	CROP	COUNTY / PLS	LAT / LON
CAE - Shannon - 11 Shannon - 11 - Jersey	8.37 Acres	Blueberry	T1N R16W S24	42.467045, -86.029007
CAE - Shannon - 12 Shannon - 12 - Rubel	1.97 Acres	Blueberry	T1N R16W S24	42.467418, -86.028012
CAE - Shannon - 13 Shannon - 13 - Jersey	1.64 Acres	Blueberry	T1N R16W S24	42.467416, -86.027653
CAE - Shannon - 14 Shannon - 14 - Rubel	3.08 Acres	Blueberry	T1N R16W S24	42.467403, -86.027254
CAE - Shannon - 15 Shannon - 15 - Blue Crop	1.39 Acres	Blueberry, Highbush Bluecrop	T1N R16W S24	42.466803, -86.026990
CAE - Shannon - 16 Shannon - 16 - Jersey	2.55 Acres	Blueberry	T1N R16W S24	42.466808, -86.026669
CAE - Shannon - 17 Shannon - 17 - Blue Crop	5.88 Acres	Blueberry, Highbush Bluecrop	T1N R16W S24	42.467167, -86.025972
CAE - Shannon - 18 Shannon - 18 - Jersey	22.6 Acres	Blueberry	T1N R16W S24	42.468013, -86.023897
TOTAL	47.48 Acres			

Parcel 2A



04726 CR 215
Grand Junction, MI 49056

Office 269-434-8082

Print Field Map

April 26, 2016

Grower **Cornerstone Ag Enterprises**

Farm **Spartan**



	Northland	7.31 Acres		Blue Crop	9.12 Acres
	Jersey	6.72 Acres		Nelson	1.75 Acres

Fields

FIELD CODE / NAME	SIZE	CROP	COUNTY / PLS	LAT / LON
CAE - Spartan - 01 Spartan - 01 - Northland	7.31 Acres	Blueberry, Highbush Northland	T1N R16W S24	42.465486, -86.028958
CAE - Spartan - 02A Spartan - 02A - Blue Crop	7.99 Acres	Blueberry, Highbush Bluecrop	T1N R16W S24	42.464177, -86.025764
CAE - Spartan - 02B Spartan - 02B - Blue Crop	1.13 Acres	Blueberry, Highbush Bluecrop	T1N R16W S24	42.463639, -86.027080
CAE - Spartan - 03A Spartan - 03A - Jersey	3.06 Acres	Blueberry	T1N R16W S24	42.463237, -86.026632
CAE - Spartan - 03B Spartan - 03B - Jersey	2.47 Acres	Blueberry	T1N R16W S24	42.463308, -86.027468
CAE - Spartan - 03C Spartan - 03C - Jersey	1.19 Acres	Blueberry	T1N R16W S24	42.464457, -86.028111
CAE - Spartan - 04 Spartan - 04 - Nelson	1.75 Acres	Blueberry	T1N R16W S24	42.463206, -86.027905

TOTAL

24.9 Acres

Parcel # 5



04726 CR 215
Grand Junction, MI 49056

Office 269-434-8082

Print Field Map

April 26, 2016

Grower **Cornerstone Ag Enterprises**

Farm **Horseshoe**



	Elliott	10.43 Acres		Blue Crop	2.54 Acres
	Jersey	4.53 Acres		Rubel	0.8 Acres

Fields

FIELD CODE / NAME	SIZE	CROP	COUNTY / PLS	LAT / LON
CAE - Horseshoe - 11 Horseshoe - 11 - Elliott	1.63 Acres	Blueberry, Highbush Elliott	Allegan T1N R15W S25	42.446320, -86.013221
CAE - Horseshoe - 12 Horseshoe - 12 - Blue Crop	2.54 Acres	Blueberry, Highbush Bluecrop	T1N R16W S24	42.445771, -86.013204
CAE - Horseshoe - 13 Horseshoe - 13 - Jersey	0.64 Acres	Blueberry	T1N R16W S24	42.444332, -86.012511
CAE - Horseshoe - 14 Horseshoe - 14 - Elliott	3.43 Acres	Blueberry, Highbush Elliott	Allegan T1N R16W S24	42.444364, -86.013042
CAE - Horseshoe - 15 Horseshoe - 15 - Rubel	0.8 Acres	Blueberry	T1N R16W S24	42.444372, -86.013598
CAE - Horseshoe - 16 Horseshoe - 16 - Jersey	3.89 Acres	Blueberry	T1N R16W S24	42.444334, -86.014157
CAE - Horseshoe - 17 Horseshoe - 17 - Elliott	5.37 Acres	Blueberry, Highbush Elliott	Allegan T1N R16W S24	42.444553, -86.015281
TOTAL	18.3 Acres			

Parcel # 6



04726 CR 215
Grand Junction, MI 49056

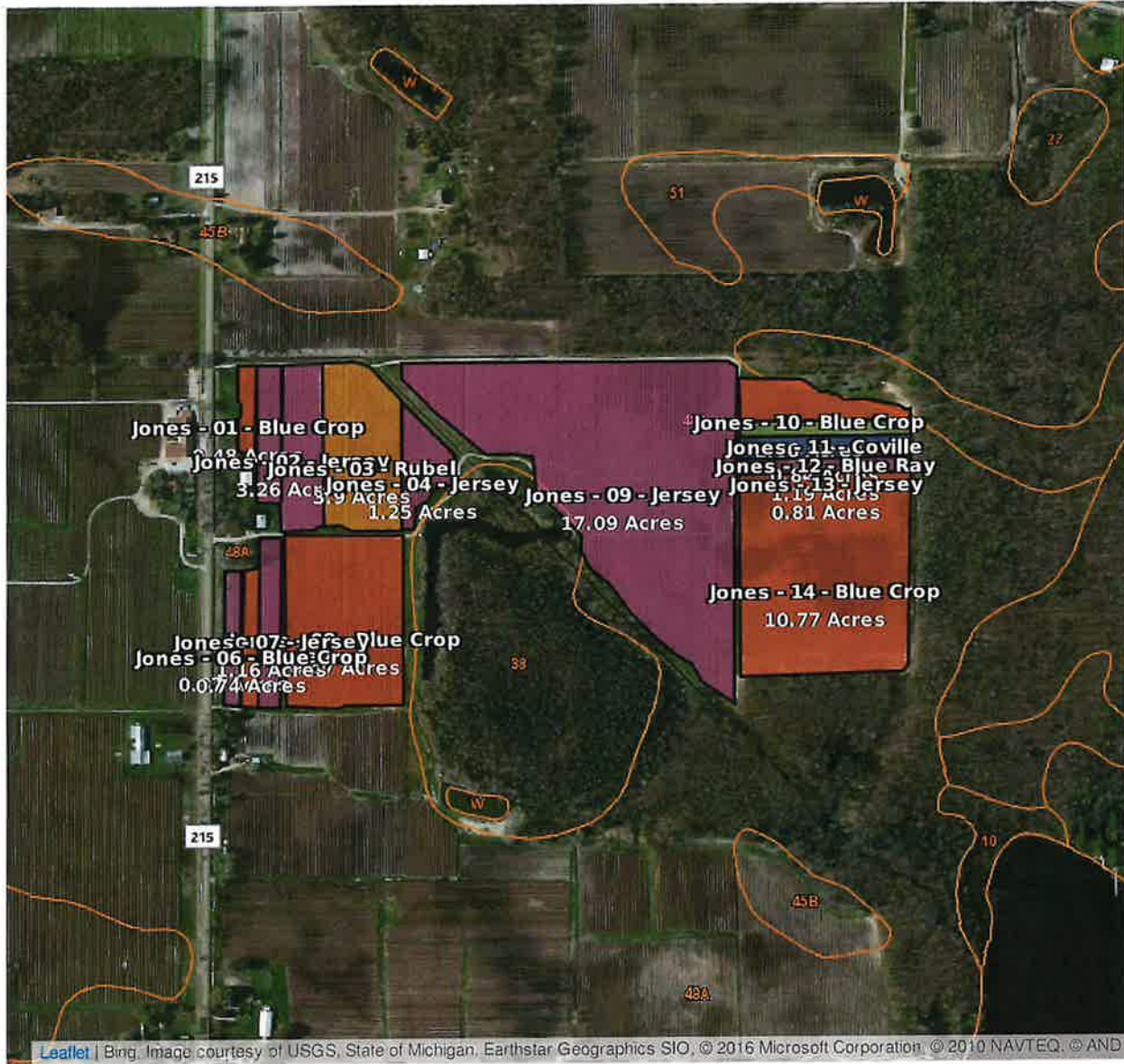
Office 269-434-8082

Print Field Map

April 26, 2016

Grower **Cornerstone Ag Enterprises**

Farm **Jones**



	Blue Crop	20.12 Acres		Jersey	24.24 Acres
	Rubel	3.9 Acres		Coville	0.84 Acres
	Blue Ray	1.19 Acres			

Fields

FIELD CODE / NAME	SIZE	CROP	COUNTY / PLS	LAT / LON
CAE - Jones - 01 Jones - 01 - Blue Crop	0.48 Acres	Blueberry, Highbush Bluecrop	T1S R15W S9	42.396592, -86.071966
CAE - Jones - 02 Jones - 02 - Jersey	3.26 Acres	Blueberry	T1S R15W S9	42.396356, -86.071219
CAE - Jones - 03 Jones - 03 - Rubel	3.9 Acres	Blueberry	T1S R15W S9	42.396040, -86.070391
CAE - Jones - 04 Jones - 04 - Jersey	1.25 Acres	Blueberry	T1S R15W S9	42.395969, -86.069491
CAE - Jones - 05 Jones - 05 - Jersey	0.67 Acres	Blueberry	T1S R15W S9	42.394275, -86.072177
CAE - Jones - 06 Jones - 06 - Blue Crop	0.74 Acres	Blueberry, Highbush Bluecrop	T1S R15W S9	42.394263, -86.071932
CAE - Jones - 07 Jones - 07 - Jersey	1.16 Acres	Blueberry	T1S R15W S9	42.394275, -86.071668
CAE - Jones - 08 Jones - 08 - Blue Crop	6.47 Acres	Blueberry, Highbush Bluecrop	T1S R15W S9	42.394437, -86.070644
CAE - Jones - 09 Jones - 09 - Jersey	17.09 Acres	Blueberry	T1S R15W S9	42.395318, -86.066331
CAE - Jones - 10 Jones - 10 - Blue Crop	1.66 Acres	Blueberry, Highbush Bluecrop	T1S R15W S9	42.396666, -86.064388
CAE - Jones - 11 Jones - 11 - Coville	0.84 Acres	Blueberry, Highbush Coville	T1S R15W S9	42.396372, -86.064004
CAE - Jones - 12 Jones - 12 - Blue Ray	1.19 Acres	Blueberry, Highbush Blueray	T1S R15W S9	42.396175, -86.064006
CAE - Jones - 13 Jones - 13 - Jersey	0.81 Acres	Blueberry	T1S R15W S9	42.395988, -86.064008
CAE - Jones - 14 Jones - 14 - Blue Crop	10.77 Acres	Blueberry, Highbush Bluecrop	T1S R15W S9	42.394933, -86.064017
TOTAL	50.29 Acres			

Parcel 7 - Blueberry Varieties



04726 CR 215
Grand Junction, MI 49056

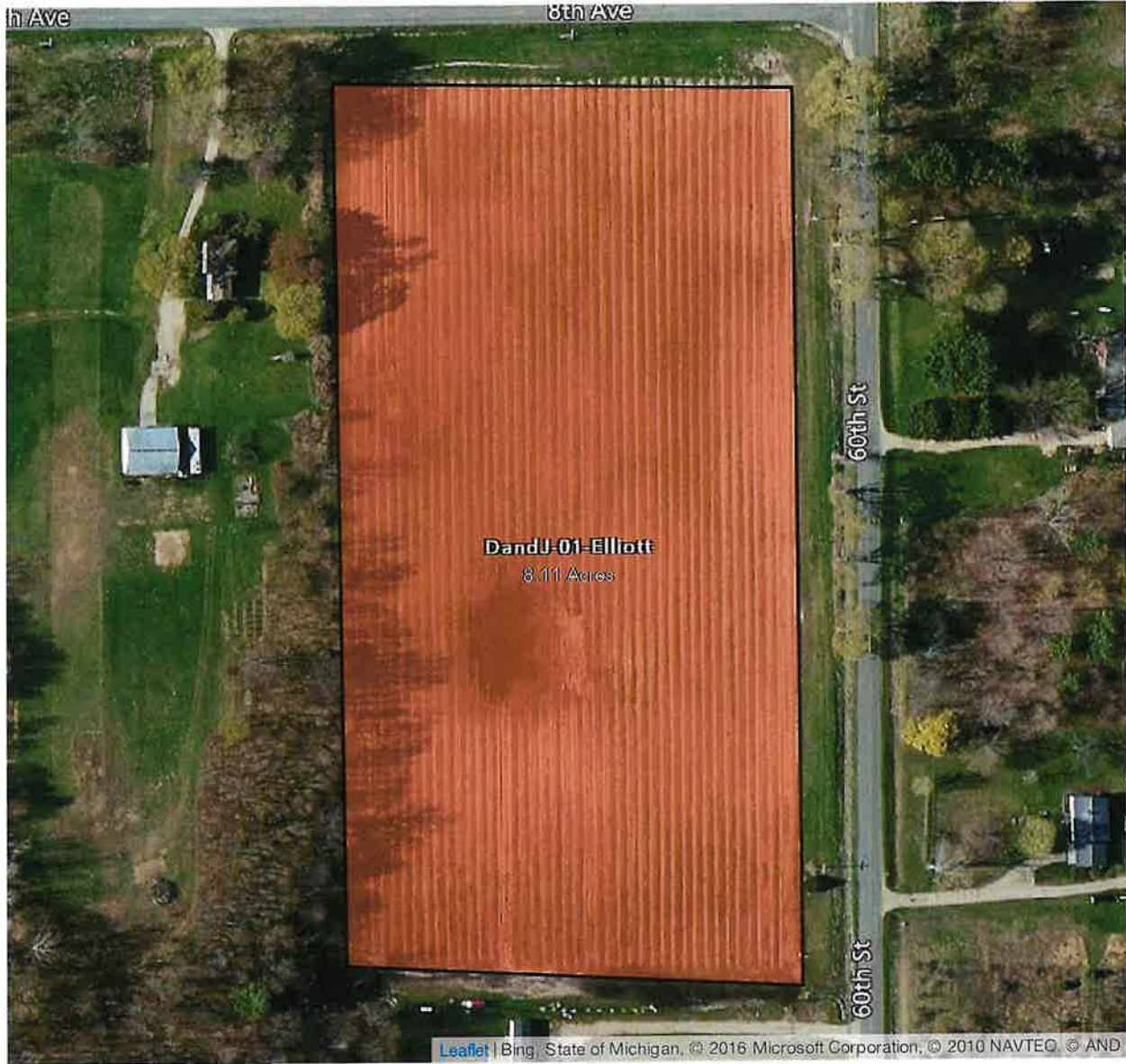
Office 269-434-8082

D and J

September 15, 2016

Grower Cornerstone Ag Enterpri...

Farm D and J



 Elliott

8.11 Acres

Plantings

FIELD CODE / NAME	PLANTING CODE / NAME	SIZE	CROP	COUNTY / PLS	LAT / LON
CAE-DandJ-01 DandJ-01-Elliott	DandJ-01- DandJ-01-Elliott	8.11 Acres	Blueberry	Van Buren T1S R16W S14	42.388560, -86.130444
TOTAL	8.11 Acres				

parcel 8



04726 CR 215
Grand Junction, MI 49056

Office 269-434-8082

Print Field Map

April 22, 2016

Grower **Cornerstone Ag Enterprises**

Farm **14th Ave**



 Jersey

13.19 Acres

Fields

FIELD CODE / NAME	SIZE	CROP	COUNTY / PLS	LAT / LON
CAE - 14th - 01 14th - 01 - Jersey	13.19 Acres	Blueberry	T1S R15W S20	42.366951, -86.080964
TOTAL	13.19 Acres			

Parcel # 9



04726 CR 215
Grand Junction, MI 49056

Office 269-434-8082

Print Field Map

April 26, 2016

Grower **Cornerstone Ag Enterprises.**

Farm **North Lake**



	Jersey	14.69 Acres		Mix	5.73 Acres
	Rubel	8.96 Acres			

Fields

FIELD CODE / NAME	SIZE	CROP	COUNTY / PLS	LAT / LON
CAE - North Lake - 01 North Lake - 01 - Jersey	7.93 Acres	Unplanted	T1S R15W S20	42.362491, -86.081565
CAE - North Lake - 02 North Lake - 02 - Jersey	6.76 Acres	Unplanted	T1S R15W S20	42.363353, -86.080339
CAE - North Lake - 03 North Lake - 03 - Mixed	5.73 Acres	Unplanted	T1S R15W S20	42.362381, -86.078357
CAE - North Lake - 04 North Lake - 04 - Rubel	7.66 Acres	Unplanted	T1S R15W S20	42.363247, -86.079110
CAE - North Lake - 05 North Lake - 05 - Rubel	1.3 Acres	Unplanted	T1S R15W S20	42.361579, -86.080307
TOTAL	29.38 Acres			

Parcel # 12



04726 CR 215
Grand Junction, MI 49056

Office 269-434-8082

Print Field Map

April 26, 2016

Grower **Cornerstone Ag Enterprises**

Farm **Kloote**



 Elliott	39.81 Acres	 Blue Crop	2.1 Acres
--	-------------	--	-----------

Leaflet | Bing, Image courtesy of USGS, State of Michigan, Earthstar Geographics SIO, © 2016 Microsoft Corporation, © 2010 NAVTEQ, © AND

Fields

FIELD CODE / NAME	SIZE	CROP	COUNTY / PLS	LAT / LON
CAE - Kloote - 01 Kloote - 01 - Elliott	1.82 Acres	Blueberry, Highbush Elliott	T2S R15W S10	42.305607, -86.033937
CAE - Kloote - 02 Kloote - 02 - Elliott	10.18 Acres	Blueberry, Highbush Elliott	T2S R15W S10	42.306903, -86.033970
CAE - Kloote - 03 Kloote - 03 - Elliott	5.76 Acres	Blueberry, Highbush Elliott	T2S R15W S10	42.306801, -86.035491
CAE - Kloote - 04 Kloote - 04 - Elliott	10.57 Acres	Blueberry, Highbush Elliott	T2S R15W S10	42.307935, -86.037139
CAE - Kloote - 05 Kloote - 05 - Elliott	2.25 Acres	Blueberry, Highbush Elliott	T2S R15W S10	42.305696, -86.037842
CAE - Kloote - 06 Kloote - 06 - Blue Crop	2.1 Acres	Blueberry, Highbush Bluecrop	T2S R15W S10	42.307994, -86.038521
CAE - Kloote - 07 Kloote - 07 - Elliott	9.23 Acres	Blueberry, Highbush Elliott	T2S R15W S10	42.307879, -86.039949
TOTAL	41.91 Acres			