

# Daybreak Dairy Farm & Dairy Equipment LIVE AUCTION

**Saturday, August 10  
11AM - Zeeland, MI**

## Equipment Terms

**INSPECTION:** Friday, August 9 from 9am-5pm & Auction Day beginning at 9AM.

**REMOVAL OF EQUIPMENT:** Auction day until 5 PM or make other arrangements. No Sunday removal.

**SALES TAX:** A 6% Michigan sales tax will be charged in addition to the auction selling price on all items. For exemption from sales tax on agricultural items, buyers will need to sign an agricultural exemption statement.

**TITLED VEHICLES:** State Regulations require that we broker all vehicles sold, therefore you must sign your paperwork in the auction office. A \$125 broker fee will be charged for paperwork. In addition, a \$15 title application fee will be collected for the State of Michigan (Dealers are exempt from the title application fee ONLY). Miedema Auctioneering will then process your titles. If you wish to plate your vehicle there will be an additional fee and proof of insurance will need to be provided for removal.

**PAYMENT:** We accept payment with cash, personal check and cashier's check. Local checks will be accepted at auction co discretion. Out of state checks MUST have a bank letter of credit GUARANTEEING payment to MIEDEMA AUCTIONEERING INC. for this auction and the amount of funds being guaranteed.

**TERMS:** All items sell "AS IS WHERE IS" with no warranty. There shall be no guarantees or warranties, expressed or implied, statutory or otherwise as to the merchantability or fitness for any particular purchase of goods offered in this sale. Complete payment auction day. All written material is subject to change. Announcements made day of sale take precedence over printed material.

## Auction Calendar

### Newark Aggregate & Landscape Supply Tues., July 16 - Lapeer, MI (Online Auction)

Newark Aggregate & Landscape Supply will be selling a complete line of aggregate equipment with Orbitbid.com. NO MINIMUMS! Featuring: Chieftain 1800 Screen-Plant, Trio engineered Products Log Washer, Terex Simplicity 3 Deck Wash Plant, Wash Plant, Water Pump with Float & Electric Motor, Power Screen FM 120 Static Sand Screw Fine Sand, Stacking Conveyors, Radial Stacking Conveyor

### 65 Acres of Potential Farm Land/Previous Golf Course Tues., July 23 - St. Johns, MI (Online Auction)

Located on US-27 in a prime location, the property is mostly flat and open with some tree lines and a pond with an irrigation pump. Made up of two parcels zoned A-2, the property includes a clubhouse and pole barn for storage. This is a great investment opportunity! Equipment will be sold separately on July 24 on Orbitbid.com.

### Daybreak Dairy - Farm & Dairy Equipment Sat. August 10 - Zeeland, MI (Live Auction)

Having sold their cows, the Elzinga's have commissioned us to sell their dairy & farm equipment. Highlights to include: Double 8 Afi Parlor Equipment with Meters, Labs, Cow ID, Tags, Etc., Mueller 6000 Gallon Bulk tank, DeLaval Variable Speed Vacuum Pump, Adjustable Head Locks, Adjustable Free Stalls, John Deere 6650 Forage Chopper, (2) Frontier MS2342 Spreaders, Manitou Telehandler Lift, JD 7405 Tractor, JD 4455 Tractor, JD 4010 Tractor, Plus much more! Live online bidding available on Proxibid.com.

### Hudsonville Fairgrounds Equipment Auction Sat. December 7 - Hudsonville, MI (Live Auction)

Fall annual Hudsonville Fairgrounds equipment auction. Featuring: Construction, Farm, Lawn/Garden & more! Consignments Accepted!

# Daybreak Dairy Farm & Dairy Equipment LIVE AUCTION - SAT. AUGUST 10

Having sold their cows, the Elzinga's have commissioned Miedema Auctioneering, Inc. to sell their dairy & farm equipment. Auction will be held at the farm at Daybreak Dairy at 4861 Adams St., Zeeland, MI 49464 starting at 11AM.



John Deere 6650 Forage Chopper  
4WD  
2280 Engine Hours  
1701 Cutter Bar Hours

**MIEDEMA**  
**AUCTIONEERING, INC.**  
**LIVE AUCTIONS**

601 Gordon Industrial Court, Byron Center, MI 49315

**1-800-527-8243**

### Owners:

**Paul Elzinga (616) 886-0969**

**Dan Elzinga (616) 218-7602**

Live Online Bidding Powered By: **proxibid**

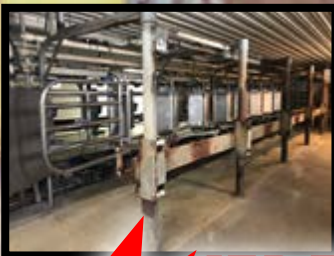
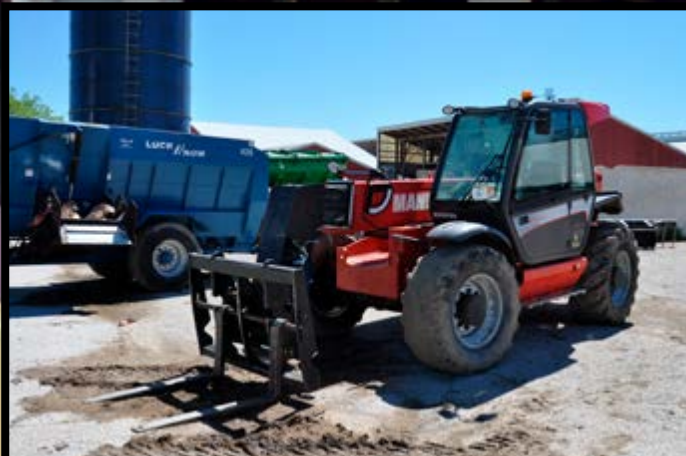


# Live Auction - 11AM

**Auction Manager: Jeremy Miedema**  
**616-460-7619**

## Daybreak Dairy - Farm & Dairy Equipment - SAT. AUG. 10

*Auction Location: 4861 Adams Street, Zeeland, MI*



### Tractors

- John Deere 7405, 1998, 1 Owner, JD 740 Loader, Diesel, MFWD, 3PT Quick Hitch, PTO, 2 Hydraulic Outlets, 18.4-38 Rear Tires, 5262 Hours
- John Deere 4455, 1992, 1 Owner, Diesel, MFWD, 3PT, PTO, Cab, 3 Hydraulic Outlets, 18.4R42 Rear Tires, 9179 Hours
- John Deere 4010, Wide Front, Diesel, 2WD, PTO, 2 Hydraulic Outlets, 18.4-34 Rear Tires

### Chopper & Heads

- John Deere 6650 Forage Chopper, 1999, 4WD, Diesel, Cab, Heat/AC, Radio, Rear Aux. Hydraulics, Silo-King Applicator, Corn Processor, Unloading Auger Camera, 30.5L-32 Front Tires, 16.9R26 Rear Tires, 2280 Engine Hours, 1701 Cutter Bar Hours

- John Deere 686 Corn Head
- John Deere 640A Hay Head

### Telehandler

- Manitou MLT 845-120 Telehandler, 2014, 1 Owner, Diesel, 4WD, Cab, Heat/AC, Radio, 15' Extension, 25' Lift Height, 10,000# Lift, 4516 Hours, Model: MLT-845LSUS

### Telehandler Attachments

- Tire Scraper, 12', Quick Attach
- Forks, 48", Quick Attach
- Silage Rake, 8', Quick Attach
- Hose Reel, Quick Attach
- 4 Yd Bucket

### Skid Steer

- John Deere 312GR, 2016, 1 Owner, Diesel, Foot Controls, Aux. Hydraulics, 10-16.5 Tires, 72" Bucket, 1407 Hours

### Quick Attachments

- Side Shooter Sand Shooter, Model 1150
- John Deere RT66 Worksite Pro Rototiller, 66"
- (2) Tire Scrapers, 7'
- John Deere Bale Spear

### Dairy Equipment

#### (Selling Grouped As Described Below)

- Mueller 6000 Gal Bulk Tank with washer, fre-heater, 2 compressors
- Afi System including meters, labs, auto takeoffs, antennas, heifer activity system, cow activity system, computer, monitor, software/program
- Afi Tag II newer style Transponders, approx. 200 offered separately
- (16) Delaval Milk Units & Pulsators, Milk Maven Pulsation Monitors & Herringbone Double 8 SS Stall System
- Delaval Variable Speed Vacuum Pump, 15HP, model GAEMKPA0145, Frenic Vacuum Control & Vacumiser
- Stainless Steel Pipeline, receiving units, plate cooler, milk pump
- Hydro System Teat Dip Foamer System with spray wand
- Impression Plus Series Water Softener
- Stainless Steel Milk House Cooler, self-contained, used to cool colostrum
- Maternity Pen Monitor, 5 cameras, computer & software
- H & L 100 Calf Feeder, 4 station
- Crowd Gate

### Livestock Equipment

- 19 Sections of (4) Head Gates for mature cows
- 12 Sections of (4) Head Gates for heifers & 12 Sections of (5) Head Gates for heifers
- Freestalls, approx. 200 for mature cows & approx. 80 for heifers
- 860' linear ft of Rubber Filled Free Stall Mattresses with cover
- (9) Ritchie & Mira-font Waterers
- H & L Colstrum Pasteurizer w/ accessories

### Lagoon Pumps & Equipment

- N-Tech Manure Pump, 35', Single Axle
- Houle GEA Manure Lagoon Pump, 6" Inlet, 4" Outlet

- Houle GEA Agitator, Model V-A-27

### Manure Spreaders

- Frontier MS2342 Spreader, 2014, Front Side Discharge, Steel Hydraulic Lid, Tandem Axle
- Frontier MS2342 Spreader, 2013, Front Side Discharge, Steel Hydraulic Lid, Tandem Axle
- New Holland 3118 Spreader, Side Discharge, Tandem Axle

### Feed Mixers

- Lucknow 425 Feed Mixer, Stainless Steel Liner, Digistar Scale, 4 Augers
- Patz 385 cu. ft. Feed Mixer

### Silage Trailers

- H&S Silage Trailer, 20', Tandem Axle, Live Bottom, Model: WB04-18/20
- Meyer 8124 Silage Trailer, 24' Tandem Axle, Live Bottom

### Trucks

- 1998 GMC 2500 SL, 4x4, Regular Cab, Long Box, Auto, 350 Gas Engine, Tool Box, 100 Gallon Fuel Tank with Electric Pump, 153,725 Miles
- 1989 Ford L8000 with Silage Box, 22' Box, Regular Cab, Tandem Axle, 6 Speed Manual Trans, Diesel, 198,812 Miles

### Farm Support Equipment

- Woods S106-3 Ditch Bank Mower
- RayTec Calf Cart
- Calf Puller
- (2) Oil Tanks, 250 Gallon
- J&M Running Gear, 6 Ton
- Hose Reel on Tandem Axle Trailer
- Michelin Tweels, 12N16.5 All Terrain Bobcat Wheels
- Drag Hose, 1980', 4 1/2", 3 Separate Hoses, 660' each, Angus brand, 1 is new
- Supply Hose, 5450' of 6" Supply Hose, Angus & Another Brand

### Owners:

**Paul Elzinga (616) 886-0969**  
**Dan Elzinga (616) 218-7602**

**MIEDEMA**  
**AUCTIONEERING, INC.**  
**LIVE AUCTIONS**

Byron Center, MI - 1-800-527-8243

Live Online Bidding Powered By: **proxibid**

**For detailed information, additional pictures & to bid visit MiedemaAuctioneering.com.**