

# ANNUAL FALL HUDSONVILLE EQUIPMENT AUCTION

## Saturday, December 1

PRSR STD MAIL  
U.S. POSTAGE  
**PAID**  
BYRON CENTER, MI  
PERMIT NO. 19

**MIEDEMA**  
**AUCTIONEERING, INC.**  
**LIVE AUCTIONS**



601 Gordon Industrial Court  
Byron Center, MI 49315



### \*IMPORTANT\*

IF YOUR MAILING LABEL HAS AN EXPRESS NUMBER, PLEASE  
BRING THIS BROCHURE TO THE AUCTION SO THAT YOU CAN BE  
REGISTERED MORE QUICKLY.



**Hudsonville, MI**

## TERMS & CONDITIONS

**Inspection:** Friday, November 30 from 8am- 5pm, and Auction Day beginning at 8am.

**Removal of Equipment:** Auction day till 5pm. Monday, December 3 - Wednesday, December 5 from 8am-5pm. There will be an additional forklift available to make loading of equipment quicker during these times only.

**Sales Tax:** All items will be charged 6% Michigan State Sales Tax. Titled vehicles will be charged Michigan State Sales Tax, unless you provide our office with a copy of a valid dealer's license (NO EXCEPTIONS). For exemption from sales tax on agricultural items, buyers will need to sign an agricultural exemption statement.

**Buyers of Titled Vehicles:** State regulations require that we broker all vehicles sold, therefore you must sign your paperwork in the auction office. A \$125 broker fee will be charged for paperwork. In addition, a \$15 title application fee will be collected for the state of Michigan (Dealers are exempt from the title application fee ONLY). Miedema Auctioneering will then process your title. If you wish to plate your vehicle there will be an additional fee. Proof of insurance will need to be provided for removal.

**Terms:** All items sell "AS IS, WHERE IS" with no warranty. There shall be no guarantees or warranties, expressed or implied, statutory or otherwise as to the merchantability or fitness for any particular purpose of any goods offered in this sale.

**Payment:** Complete payment auction day by cash, cashier's check, Visa, Mastercard. A 3% Buyer's Premium will be added to the high bid. This 3% is waived for payment by cash or check. Personal or company checks MUST have a bank letter of credit GUARANTEEING payment to MIEDEMA AUCTIONEERING INC. for this auction and the amount of funds being guaranteed. See guarantee form on our website at MiedemaAuctioneering.com.

All written material is subject to change. Announcements made day of sale take precedence over printed material.

## UPCOMING AUCTIONS

### HUDSONVILLE EQUIPMENT AUCTION

Saturday, December 1 • 10AM • Hudsonville, MI  
See this brochure. Call Chuck Ranney (616) 560-0839 to sell.

### WPI, LLC (PLASTIC INJECTION MOLDING)

Wednesday, December 5 • 10AM • Spring Lake, MI  
WPI, LLC (Plastic Injection Molding Shop) is moving operations and completely liquidating the machinery & equipment at the Spring Lake location. All assets will be auctioned to the highest bidder. In conjunction with Aaron Equipment Company. Internet Bidding available on Bidspotter.

### BADER & SONS CO. 27TH ANNUAL AUCTION

Saturday, February 23 • 9AM • St. Louis, MI  
Used trade in equipment from all Bader locations will be selling to the highest bidder.

### HUDSONVILLE EQUIPMENT AUCTION

Saturday, March 23 • 10AM • Hudsonville, MI  
Spring annual fairgrounds auction. Call Chuck Ranney (616) 560-0839 to sell.



Visit us at the auction at the Hudsonville Fairgrounds on December 1

Cash & Carry the day of the auction

# 2018 ANNUAL FALL HUDSONVILLE EQUIPMENT AUCTION

## SATURDAY, DECEMBER 1, 2018 - 10 AM

Hudsonville Fairgrounds: 5235 40th Ave, Hudsonville, MI 49423



**Multiple  
Auction  
Rings!**

**Rings 1 & 2  
Bid Live or Online**

### EQUIPMENT DROP OFF TIMES:

**Monday, November 26**  
8am- 5pm

**Tuesday, November 27**  
8am- 5pm

**Wednesday, November 28**  
8am- 5pm

**Thursday, November 29**  
8am- 5pm

**Friday, November 30**  
8am- 3pm

(Delivery of small misc. items  
stops at 4pm on Thursday)



**MIEDEMA**  
**AUCTIONEERING, INC.**  
**LIVE AUCTIONS**

MIEDEMAAUCTIONEERING.COM  
1-800-LASTBID  
BYRON CENTER, MI

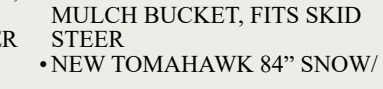
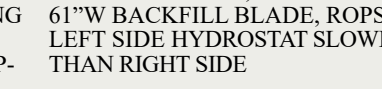
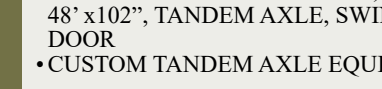
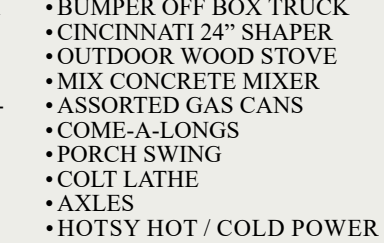
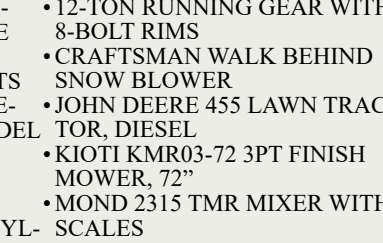
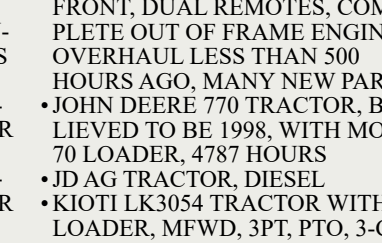
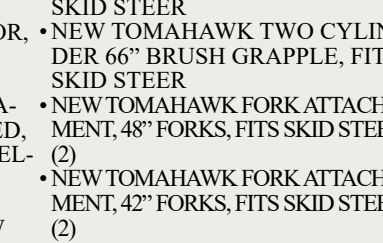
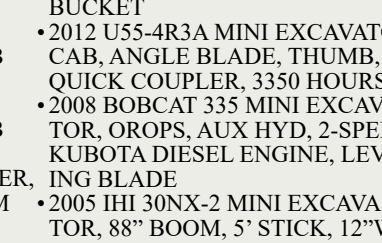
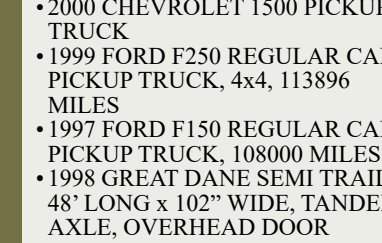
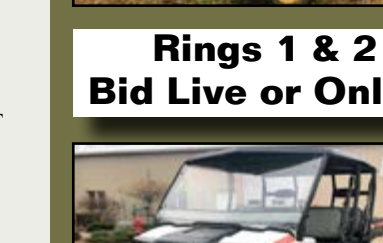
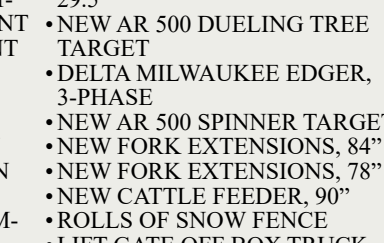
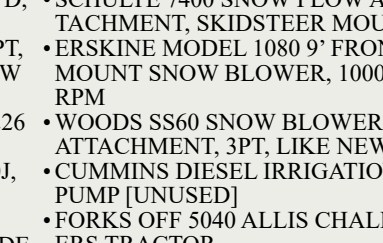
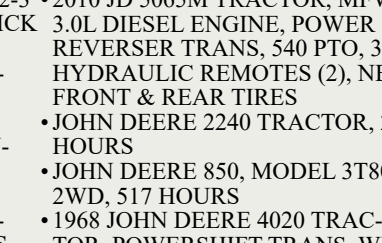
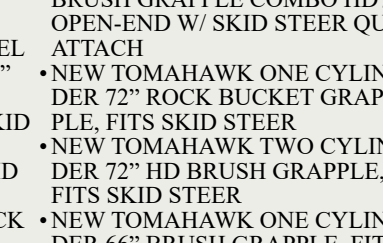
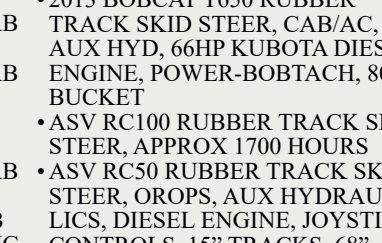
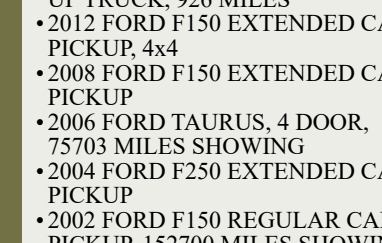
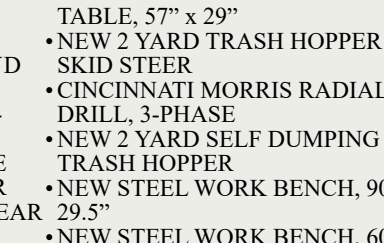
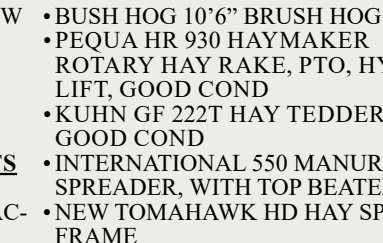
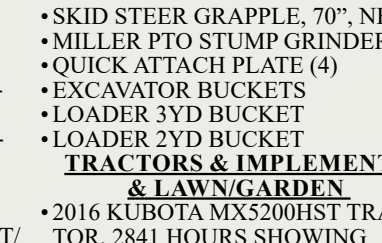
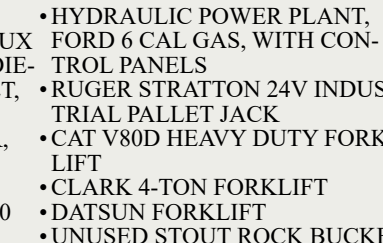
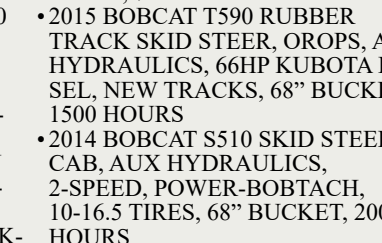
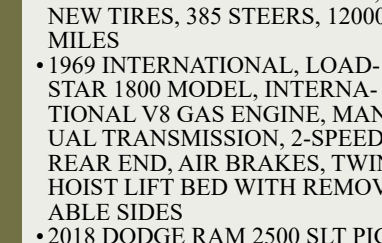
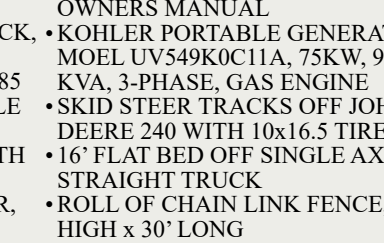
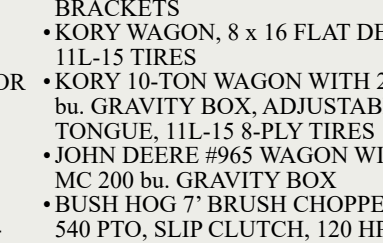
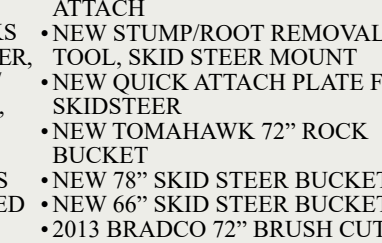
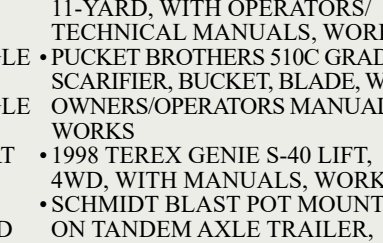
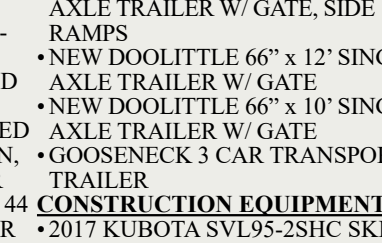
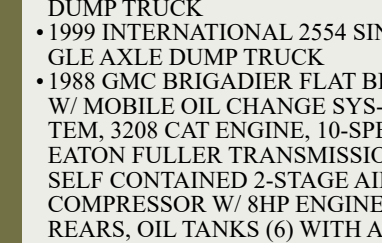
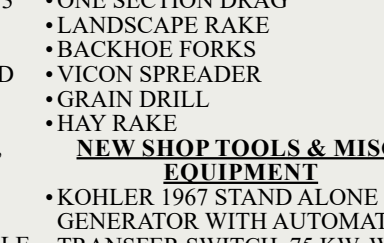
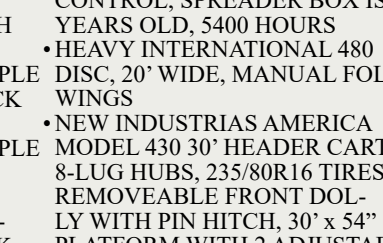
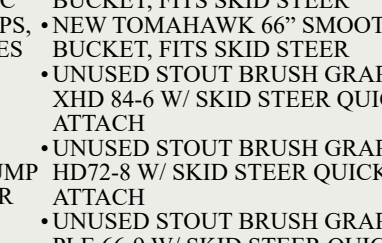
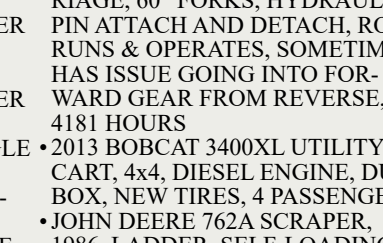
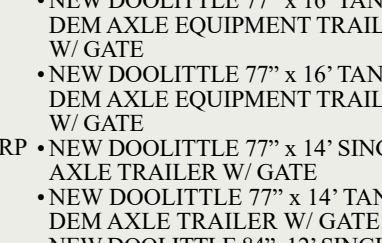
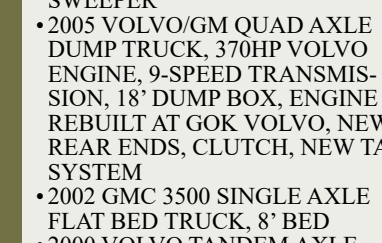
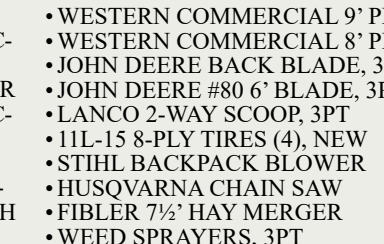
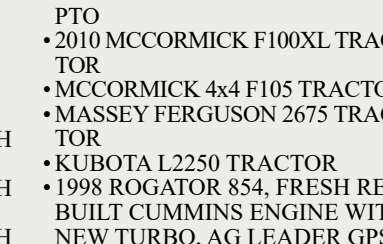
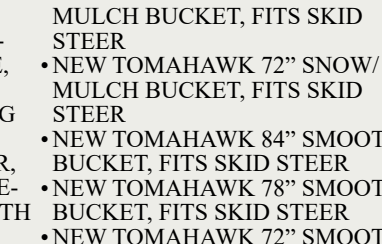
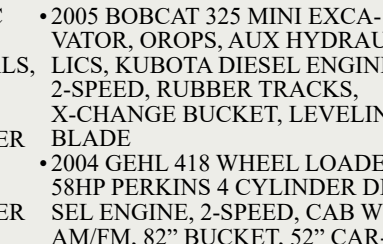
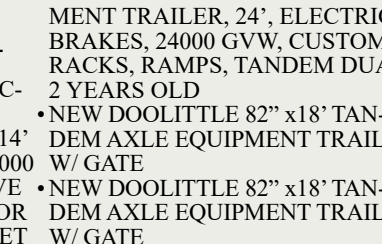
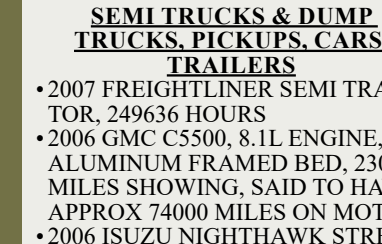


**AUCTION MANAGER:**  
**CHUCK RANNEY**  
(616) 560-0839





# FALL HUDSONVILLE EQUIPMENT AUCTION



## SEMI TRUCKS & DUMP TRUCKS, PICKUPS, CARS, TRAILERS

- 2007 FREIGHTLINER SEMI TRACTOR, 249636 HOURS
- 2006 GMC C5500, 8.1L ENGINE, 14' ALUMINUM FRAMED BED, 230000 MILES SHOWING, SAID TO HAVE APPROX 74000 MILES ON MOTOR
- 2006 ISUZU NIGHTHAWK STREET SWEEPER
- 2005 VOLVO/GM QUAD AXLE DUMP TRUCK, 370HP VOLVO ENGINE, 9-SPEED TRANSMISSION, 18' DUMP BOX, ENGINE REBUILT AT GOK VOLVO, NEW REAR ENDS, CLUTCH, NEW TARP SYSTEM
- 2002 GMC 3500 SINGLE AXLE FLAT BED TRUCK, 8' BED
- 2000 VOLVO TANDEM AXLE DUMP TRUCK
- 1999 INTERNATIONAL 2554 SINGLE AXLE DUMP TRUCK
- 1988 GMC BRIGADIER FLAT BED W/ MOBILE OIL CHANGE SYSTEM, 3208 CAT ENGINE, 10-SPEED EATON FULLER TRANSMISSION, SELF CONTAINED 2-STAGE AIR COMPRESSOR W/ 8HP ENGINE, 44 REARS, OIL TANKS (6) WITH AIR POWERED FIRE BULL PUMPS, NEW TIRES, 385 STEERS, 120000 MILES
- 1969 INTERNATIONAL, LOAD-STAR 1800 MODEL, INTERNATIONAL V8 GAS ENGINE, MANUAL TRANSMISSION, 2-SPEED REAR END, AIR BRAKES, TWIN HOIST LIFT BED WITH REMOVABLE SIDES
- 2018 DODGE RAM 2500 SLT PICKUP TRUCK, 926 MILES
- 2012 FORD F150 EXTENDED CAB PICKUP, 4x4
- 2008 FORD F150 EXTENDED CAB PICKUP
- 2006 FORD TAURUS, 4 DOOR, 75703 MILES SHOWING
- 2004 FORD F250 EXTENDED CAB PICKUP
- 2002 FORD F150 REGULAR CAB PICKUP, 152700 MILES SHOWING
- 2000 CHEVROLET 1500 PICKUP TRUCK
- 1999 FORD F250 REGULAR CAB PICKUP TRUCK, 4x4, 113896 MILES
- 1997 FORD F150 REGULAR CAB PICKUP TRUCK, 108000 MILES
- 1998 GREAT DANE SEMI TRAILER, 48' LONG x 102" WIDE, TANDEM AXLE, OVERHEAD DOOR
- 1996 WABASH SEMI TRAILER, 48' x 102", TANDEM AXLE, SWING DOOR
- CUSTOM TANDEM AXLE EQUIP-

- MENT TRAILER, 24', ELECTRIC BRAKES, 24000 GVW, CUSTOM RACKS, RAMPS, TANDEM DUALS, 2 YEARS OLD
- NEW DOOLITTLE 82" x 18' TANDEM AXLE EQUIPMENT TRAILER W/ GATE
- NEW DOOLITTLE 82" x 18' TANDEM AXLE EQUIPMENT TRAILER W/ GATE
- NEW DOOLITTLE 77" x 16' TANDEM AXLE EQUIPMENT TRAILER W/ GATE
- NEW DOOLITTLE 77" x 16' TANDEM AXLE EQUIPMENT TRAILER W/ GATE
- NEW DOOLITTLE 77" x 14' SINGLE AXLE TRAILER W/ GATE
- NEW DOOLITTLE 77" x 14' TANDEM AXLE TRAILER W/ GATE
- NEW DOOLITTLE 84"x12' SINGLE AXLE TRAILER W/ GATE, SIDE RAMPS
- NEW DOOLITTLE 66" x 12' SINGLE AXLE TRAILER W/ GATE
- NEW DOOLITTLE 66" x 10' SINGLE AXLE TRAILER W/ GATE
- GOOSENECK 3 CAR TRANSPORT TRAILER
- 2017 KUBOTA SVL95-2SHC SKID STEER, 74 HOURS
- 2015 BOBCAT T590 RUBBER TRACK SKID STEER, OROPS, AUX HYDRAULICS, 66HP KUBOTA DIESEL, NEW TRACKS, 68" BUCKET, 1500 HOURS
- 2014 BOBCAT S510 SKID STEER, CAB, AUX HYDRAULICS, 2-SPEED, POWER-BOBTACH, 10-16.5 TIRES, 68" BUCKET, 2000 HOURS
- 2013 BOBCAT T650 RUBBER TRACK SKID STEER, CAB/AC, AUX HYD, 66HP KUBOTA DIESEL ENGINE, POWER-BOBTACH, 80" BUCKET
- ASV RC100 RUBBER TRACK SKID STEER, APPROX 1700 HOURS
- ASV RC50 RUBBER TRACK SKID STEER, OROPS, AUX HYDRAULICS, DIESEL ENGINE, JOYSTICK CONTROLS, 15" TRACKS, 68" BUCKET
- 2012 U55-4R3A MINI EXCAVATOR, CAB, ANGLE BLADE, THUMB, QUICK COUPLER, 3350 HOURS
- 2008 BOBCAT 335 MINI EXCAVATOR, OROPS, AUX HYD, 2-SPEED, KUBOTA DIESEL ENGINE, LEVELING BLADE
- 2005 IHI 30NX-2 MINI EXCAVATOR, 88" BOOM, 5' STICK, 12"W RUBBER TRACKS, 17.5" BUCKET, 61"W BACKFILL BLADE, ROPS, LEFT SIDE HYDROSTAT SLOWER THAN RIGHT SIDE

## CONSTRUCTION EQUIPMENT

- 2005 BOBCAT 325 MINI EXCAVATOR, OROPS, AUX HYDRAULICS, KUBOTA DIESEL ENGINE, 2-SPEED, RUBBER TRACKS, X-CHANGE BUCKET, LEVELING BLADE
- 2004 GEHL 418 WHEEL LOADER, 58HP PERKINS 4 CYLINDER DIESEL ENGINE, 2-SPEED, CAB WITH AM/FM, 82" BUCKET, 52" CARRIAGE, 60" FORKS, HYDRAULIC PIN ATTACH AND DETACH, ROPS, RUNS & OPERATES, SOMETIMES HAS ISSUE GOING INTO FORWARD GEAR FROM REVERSE, 4181 HOURS
- 2013 BOBCAT 3400XL UTILITY CART, 4x4, DIESEL ENGINE, DUMP BOX, NEW TIRES, 4 PASSENGER
- JOHN DEERE 762A SCRAPER, 1986, LADDER, SELF-LOADING, 11-YARD, WITH OPERATORS/ TECHNICAL MANUALS, WORKS
- PUCKET BROTHERS 510C GRADER, SCARIFIER, BUCKET, BLADE, W/ OWNERS/OPERATORS MANUAL, WORKS
- 1998 TEREX GENIE S-40 LIFT, 4WD, WITH MANUALS, WORKS
- SCHMIDT BLAST POT MOUNTED ON TANDEM AXLE TRAILER, DUAL CONTROL
- HYDRAULIC POWER PLANT, FORD 6 CAL GAS, WITH CONTROL PANELS
- RUGER STRATTON 24V INDUSTRIAL PALLET JACK
- CAT V80D HEAVY DUTY FORKLIFT
- CLARK 4-TON FORKLIFT
- DATSUN FORKLIFT
- UNUSED STOUT ROCK BUCKET/ BRUSH GRAPPLE COMBO HD72-3 OPEN-END W/ SKID STEER QUICK ATTACH
- NEW TOMAHAWK ONE CYLINDER 72" ROCK BUCKET GRAPPLE, FITS SKID STEER
- NEW TOMAHAWK TWO CYLINDER 72" HD BRUSH GRAPPLE, FITS SKID STEER
- NEW TOMAHAWK ONE CYLINDER 66" BRUSH GRAPPLE, FITS SKID STEER
- NEW TOMAHAWK TWO CYLINDER 66" BRUSH GRAPPLE, FITS SKID STEER
- NEW TOMAHAWK FORK ATTACHMENT, 48" FORKS, FITS SKID STEER (2)
- NEW TOMAHAWK FORK ATTACHMENT, 42" FORKS, FITS SKID STEER (2)
- NEW TOMAHAWK 90" SNOW/ MULCH BUCKET, FITS SKID STEER
- NEW TOMAHAWK 84" SNOW/

- MULCH BUCKET, FITS SKID STEER
- NEW TOMAHAWK 72" SNOW/ MULCH BUCKET, FITS SKID STEER
- NEW TOMAHAWK 84" SMOOTH BUCKET, FITS SKID STEER
- NEW TOMAHAWK 78" SMOOTH BUCKET, FITS SKID STEER
- NEW TOMAHAWK 72" SMOOTH BUCKET, FITS SKID STEER
- NEW TOMAHAWK 66" SMOOTH BUCKET, FITS SKID STEER
- UNUSED STOUT BRUSH GRAPPLE XHD 84-6 W/ SKID STEER QUICK ATTACH
- UNUSED STOUT BRUSH GRAPPLE HD72-8 W/ SKID STEER QUICK ATTACH
- UNUSED STOUT BRUSH GRAPPLE 66-9 W/ SKID STEER QUICK ATTACH
- NEW STUMP/ROOT REMOVAL TOOL, SKID STEER MOUNT
- NEW QUICK ATTACH PLATE FOR SKIDSTEER
- NEW TOMAHAWK 72" ROCK BUCKET
- NEW 78" SKID STEER BUCKET
- NEW 66" SKID STEER BUCKET
- 2013 BRADCO 72" BRUSH CUTTER
- SKID STEER GRAPPLE, 70", NEW
- MILLER PTO STUMP GRINDER
- QUICK ATTACH PLATE (4)
- EXCAVATOR BUCKETS
- LOADER 3YD BUCKET
- LOADER 2YD BUCKET

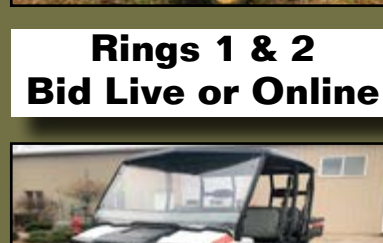
## TRACTORS & IMPLEMENTS & LAWN/GARDEN

- 2016 KUBOTA MX5200HST TRACTOR, 2841 HOURS SHOWING
- 2010 JD 5065M TRACTOR, MFWD, 3.0L DIESEL ENGINE, POWER REVERSER TRANS, 540 PTO, 3PT, HYDRAULIC REMOTES (2), NEW FRONT & REAR TIRES
- JOHN DEERE 2240 TRACTOR, 226 HOURS
- JOHN DEERE 850, MODEL 3T80J, 2WD, 517 HOURS
- 1968 JOHN DEERE 4020 TRACTOR, POWERSHIFT TRANS, WIDE FRONT, DUAL REMOTES, COMPLETE OUT OF FRAME ENGINE OVERHAUL LESS THAN 500 HOURS AGO, MANY NEW PARTS
- JOHN DEERE 770 TRACTOR, BELIEVED TO BE 1998, WITH MODEL 70 LOADER, 4787 HOURS
- JD AG TRACTOR, DIESEL
- KIOTI LK3054 TRACTOR WITH LOADER, MFWD, 3PT, PTO, 3-CYLINDER DIESEL ENGINE, 30HP, 1432 HOURS
- NEW HOLLAND TS110 TRACTOR WITH SIDE MOWER, 1998, 3PT, PTO
- 2010 MCCORMICK F100XL TRACTOR
- MCCORMICK 4x4 F105 TRACTOR
- MASSEY FERGUSON 2675 TRACTOR
- KUBOTA L2250 TRACTOR
- 1998 ROGATOR 854, FRESH REBUILT CUMMINS ENGINE WITH NEW TURBO, AG LEADER GPS CONTROL, SPREADER BOX IS 3 YEARS OLD, 5400 HOURS
- HEAVY INTERNATIONAL 480 DISC, 20' WIDE, MANUAL FOLD WINGS
- NEW INDUSTRIAS AMERICA MODEL 430 30' HEADER CART, 8-LUG HUBS, 235/80R16 TIRES, REMOVEABLE FRONT DOLLY WITH PIN HITCH, 30' x 54" PLATFORM WITH 2 ADJUSTABLE BRACKETS
- KORY WAGON, 8 x 16 FLAT DECK, 11L-15 TIRES
- KORY 10-TON WAGON WITH 285 bu. GRAVITY BOX, ADJUSTABLE TONGUE, 11L-15 8-PLY TIRES
- JOHN DEERE #965 WAGON WITH MC 200 bu. GRAVITY BOX
- BUSH HOG 7' BRUSH CHOPPER, 540 PTO, SLIP CLUTCH, 120 HP GEAR BOX
- BUSH HOG 10'6" BRUSH HOG
- PEQUA HR 930 HAYMAKER
- ROTARY HAY RAKE, PTO, HYD LIFT, GOOD COND
- KUHN GF 222T HAY TEDDER-GOOD COND
- INTERNATIONAL 550 MANURE SPREADER, WITH TOP BEATER
- NEW TOMAHAWK HD HAY SPEAR FRAME
- SCHULTE 7400 SNOW PLOW ATTACHMENT, SKIDSTEER MOUNT
- ERSKINE MODEL 1080 9' FRONT MOUNT SNOW BLOWER, 1000 RPM
- WOODS SS60 SNOW BLOWER ATTACHMENT, 3PT, LIKE NEW
- CUMMINS DIESEL IRRIGATION PUMP [UNUSED]
- FORKS OFF 5040 ALLIS CHALMERS TRACTOR
- 12-TON RUNNING GEAR WITH 8-BOLT RIMS
- CRAFTSMAN WALK BEHIND SNOW BLOWER
- JOHN DEERE 455 LAWN TRACTOR, DIESEL
- KIOTI KMR03-72 3PT FINISH MOWER, 72"
- MOND 2315 TMR MIXER WITH SCALES
- WOOD CHIPPER, 4", 3PT, 540 PTO, NEW
- TORO WALK BEHIND SNOW BLOWER

- WESTERN COMMERCIAL 9' PLOW
- WESTERN COMMERCIAL 8' PLOW
- JOHN DEERE BACK BLADE, 3PT
- JOHN DEERE #80 6' BLADE, 3PT
- LANCO 2-WAY SCOOP, 3PT
- 11L-15 8-PLY TIRES (4), NEW
- STIHL BACKPACK BLOWER
- HUSQVARNA CHAIN SAW
- FIBLER 7½' HAY MERGER
- WEED SPRAYERS, 3PT
- ONE SECTION DRAG
- LANDSCAPE RAKE
- BACKHOE FORKS
- VICON SPREADER
- GRAIN DRILL
- HAY RAKE

## NEW SHOP TOOLS & MISC. EQUIPMENT

- KOHLER 1967 STAND ALONE GENERATOR WITH AUTOMATIC TRANSFER SWITCH, 75 KW, WITH OWNERS MANUAL
- KOHLER PORTABLE GENERATOR, MOEL UV549KOC11A, 75KW, 93 75 KVA, 3-PHASE, GAS ENGINE
- SKID STEER TRACKS OFF JOHN DEERE 240 WITH 10x16.5 TIRES
- 16' FLAT BED OFF SINGLE AXLE STRAIGHT TRUCK
- ROLL OF CHAIN LINK FENCE, 4' HIGH x 30' LONG
- NEW HEAVY DUTY WELDING TABLE, 57" x 29"
- NEW 2 YARD TRASH HOPPER FOR SKID STEER
- CINCINNATI MORRIS RADIAL DRILL, 3-PHASE
- NEW 2 YARD SELF DUMPING TRASH HOPPER
- NEW STEEL WORK BENCH, 90" x 29.5"
- NEW STEEL WORK BENCH, 60" x 29.5"
- NEW AR 500 DUELING TREE TARGET
- DELTA MILWAUKEE EDGER, 3-PHASE
- NEW AR 500 SPINNER TARGET
- NEW FORK EXTENSIONS, 84"
- NEW FORK EXTENSIONS, 78"
- NEW CATTLE FEEDER, 90"
- ROLLS OF SNOW FENCE
- LIFT GATE OFF BOX TRUCK
- BUMPER OFF BOX TRUCK
- CINCINNATI 24" SHAPER
- OUTDOOR WOOD STOVE
- MIX CONCRETE MIXER
- ASSORTED GAS CANS
- COME-A-LONGS
- PORCH SWING
- COLT LATHE
- AXLES
- HOTSY HOT / COLD POWER WASHER WORKS GOOD
- **PLUS MUCH MORE TO BE ADDED! LIST SUBJECT TO CHANGE.**



**Rings 1 & 2  
Bid Live or Online**